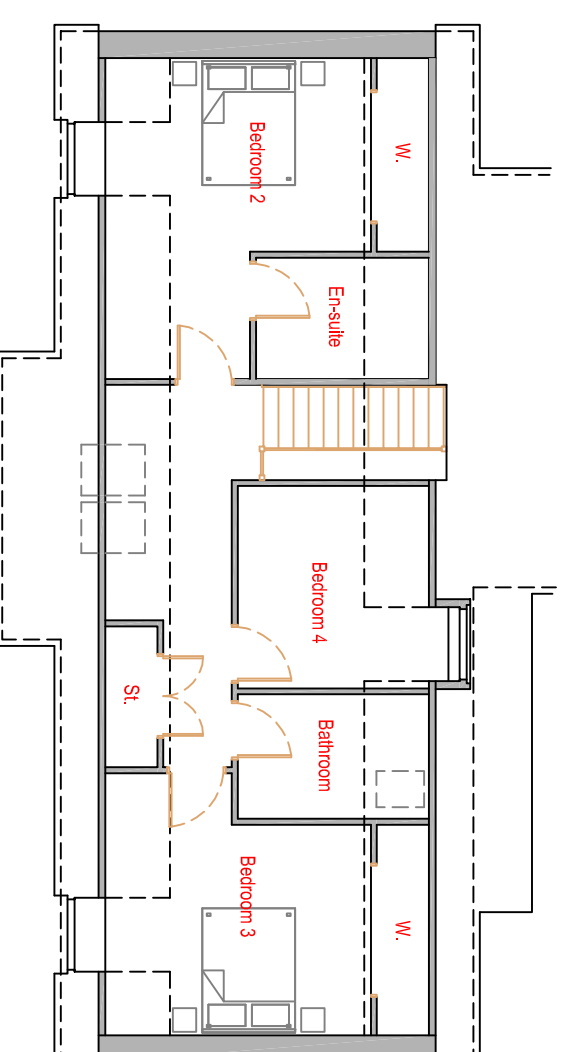




Room Sizes	metric (m)	imperial
Lounge	4.92 x 5.5	16'2" x 18'1"
Dining	3.49 x 3.65	11'5" x 12'
Kitchen / Family	6.39 x 5.5	21' x 18'1"
Utility	2.4 x 2.98	7'10" x 9'9"
Bedroom 1	3.93 x 4.75 max	12'11" x 15'7" max
Bedroom 1 en-suite	1.48 x 2.36	4'10" x 15'7"
Bedroom 2	4.92max x 4.07	16'2"max x 13'4"
Bedroom 2 en-suite	1.86 x 2.65	6'1" x 8'8"
Bedroom 3	4.02 x 4.07	13'2" x 13'4"
Bedroom 4	3.1 x 2.93	10'2" x 9'7"
Bathroom	1.91 x 2.93	6'3" x 9'7"
House Floor Area	206 sqm	



Ground Floor Plan



First Floor Plan

Every effort has been made to ensure details on this plan are accurate but this plan is indicative and non contractual

## House Floor Area - 206m<sup>2</sup>

**PROJECT:**

Lower Scotston  
Laurencekirk  
Aberdeenshire

**DRAWING:**

Plot 3 Sales Plan  
Floor Plans & Front Elevation

drawing no:  
NC00025-0301

scale:  
NTS

date:  
Sept 2014

Tel 01561 320004

Bruce Estates, PO Box 11632, Laurencekirk, Aberdeenshire, AB30 9AB

E-mail : [info@bruce-estates.co.uk](mailto:info@bruce-estates.co.uk)

[www.bruce-estates.co.uk](http://www.bruce-estates.co.uk)

Rev A artist impression & room sizes added

18/09/14



# BRUCE

ESTATES-LLP