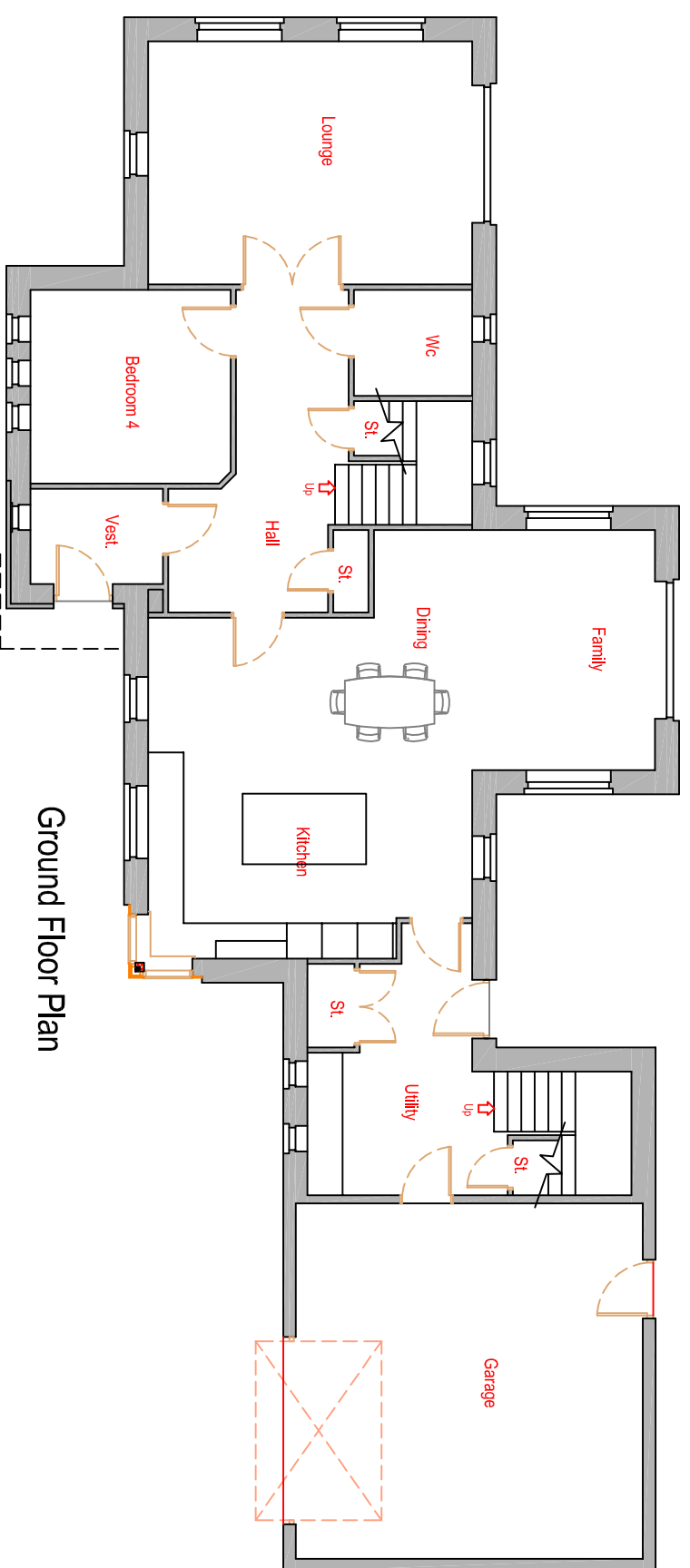


First Floor Plan



Ground Floor Plan

Room Sizes	metric (m)	imperial
Lounge	4.13 x 5.5	13'7 x 18'1
Kitchen / Dining	5.79 x 5.5	19' x 18'1
Family / Dining	4.08 x 4.77	13'5 x 15'8
Utility	2.93 x 2.80	9'7 x 9'2
Bedroom 1	3.62 x 4.94	11'10 x 16'3
Bedroom 1 en-suite	2.31 x 2.13	7'7 x 7'
Bedroom 2	3.38 x 4.96	11'1 x 16'3
Bedroom 3	3.54 x 4.45	11'7 x 14'7
Bedroom 4	3.29 x 3.40	10'10 x 11'2
Bathroom	2.51 x 2.65	8'3 x 8'8
Office	5.98 x 3.58	19'7 x 11'9
House Floor Area	240 sqm	

House Floor Area - 240m²

Every effort has been made to ensure details on this plan are accurate but this plan is indicative and non contractual

PROJECT:
Lower Scotston
Laurencekirk
Aberdeenshire

DRAWING:
Plot 1 Sales Plan
Floor Plans & Front Elevation

drawing no: NC00025-0101
scale: NTS
date: Sept 2014

Rev B artist impression added 18/09/14
Rev A room sizes added 10/09/14

Bruce Estates, PO Box 11632, Laurencekirk, Aberdeenshire, AB30 9AB
Tel 01561 320004 E-mail : info@bruce-estates.co.uk www.bruce-estates.co.uk