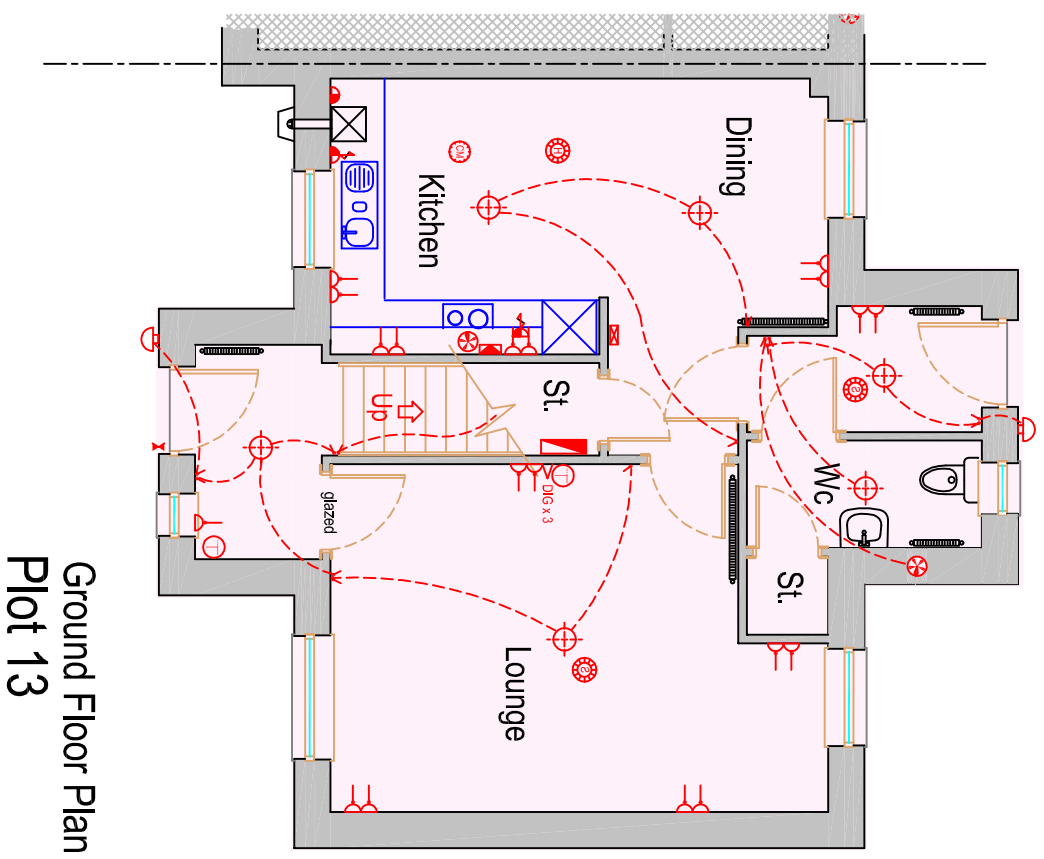
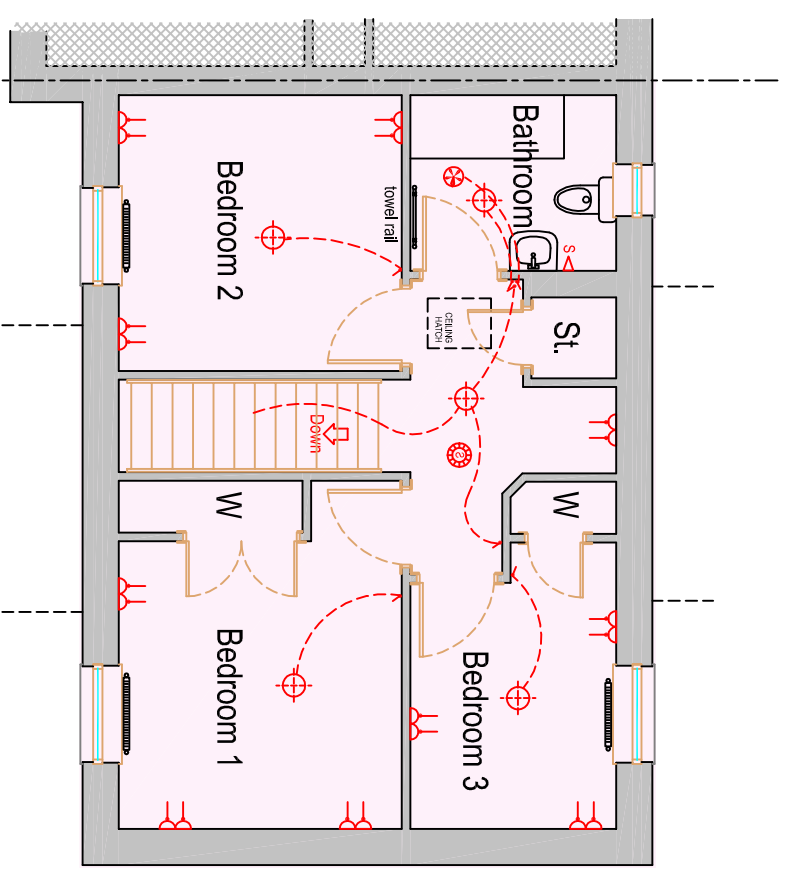


Room Sizes	metric (M)	imperial
Lounge	3.85 x 5.51 max	128 x 181 max
Kitchen/Dining	3.05 x 5.51	10' x 18'1
Bedroom 1	3.18 x 3.13	106 x 10'3
Bedroom 2	3.08 x 3.13	101' x 10'3
Bedroom 3	3.17 max x 2.28	10'5 max x 7'6
bathroom	1.97 x 2.28	6' x 7'6



Ground Floor Plan
Plot 13



First Floor Plan
Plot 13

- LEGEND**
- 1 GANG SOCKET
 - 2 GANG SOCKET
 - UNDER UNIT SOCKET
 - SPUR
 - SINGLE SWITCH
 - DOUBLE SWITCH
 - CONSUMER UNIT & METER
 - EXTRACT FAN
 - COOKER CONTROL UNIT
 - TIME CLOCK
 - HEATING ZONE THERMOSTAT
 - HEATING RECOVERY CONTROL
 - TELEPHONE POINT , MASTER
 - TELEPHONE POINT , STD
 - DATA NETWORK (Cat6)
 - DIGITAL CABLE POINT
 - SHOWER POINT
 - SMOKE ALARM
 - HEAT ALARM
 - DOOR CHIME
 - BELL PUSH
 - DOOR CHIME
 - DOOR CHIME
 - PENDANT LIGHT
 - RECESSED LIGHT
 - WALL LIGHT
 - STRIP LIGHT
 - RAD
 - ALARM SYSTEM



Every effort has been made to ensure details on this plan are accurate but this plan is indicative and non contractual and subject to change without notice

Plot 13 House Type

Eskside, East Mains, Angus, DD9 7WE