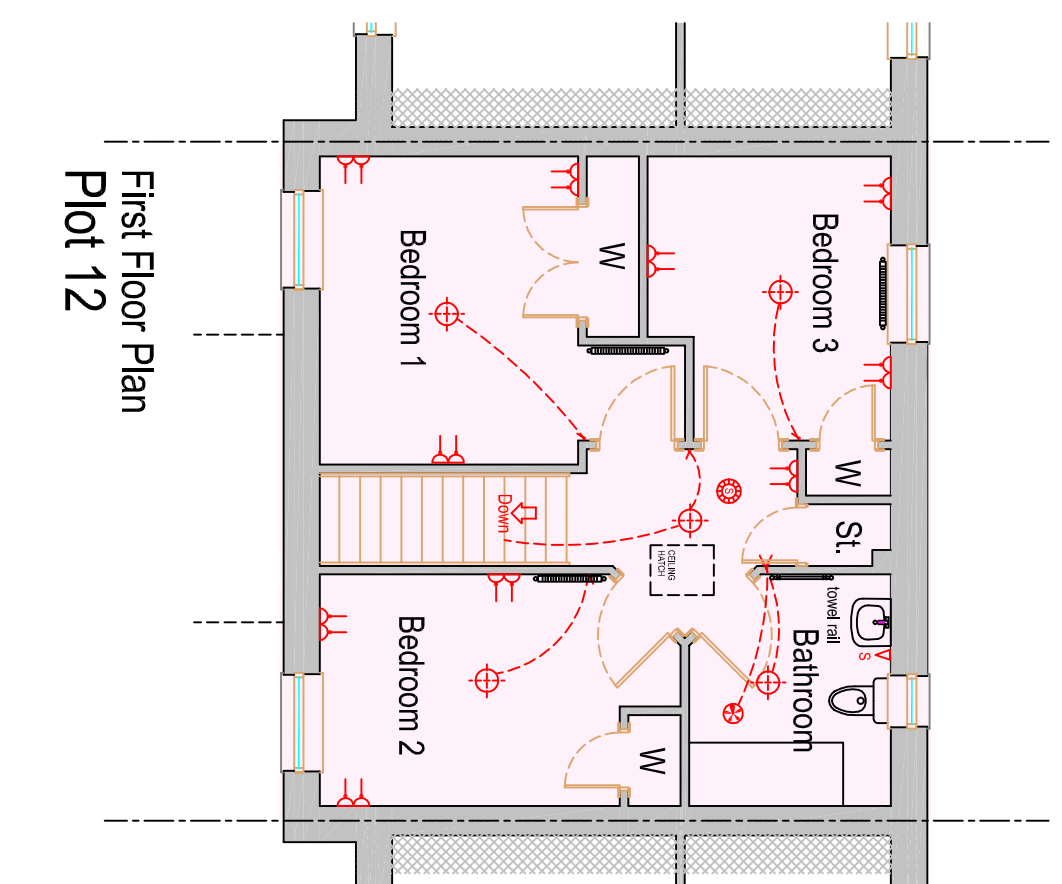
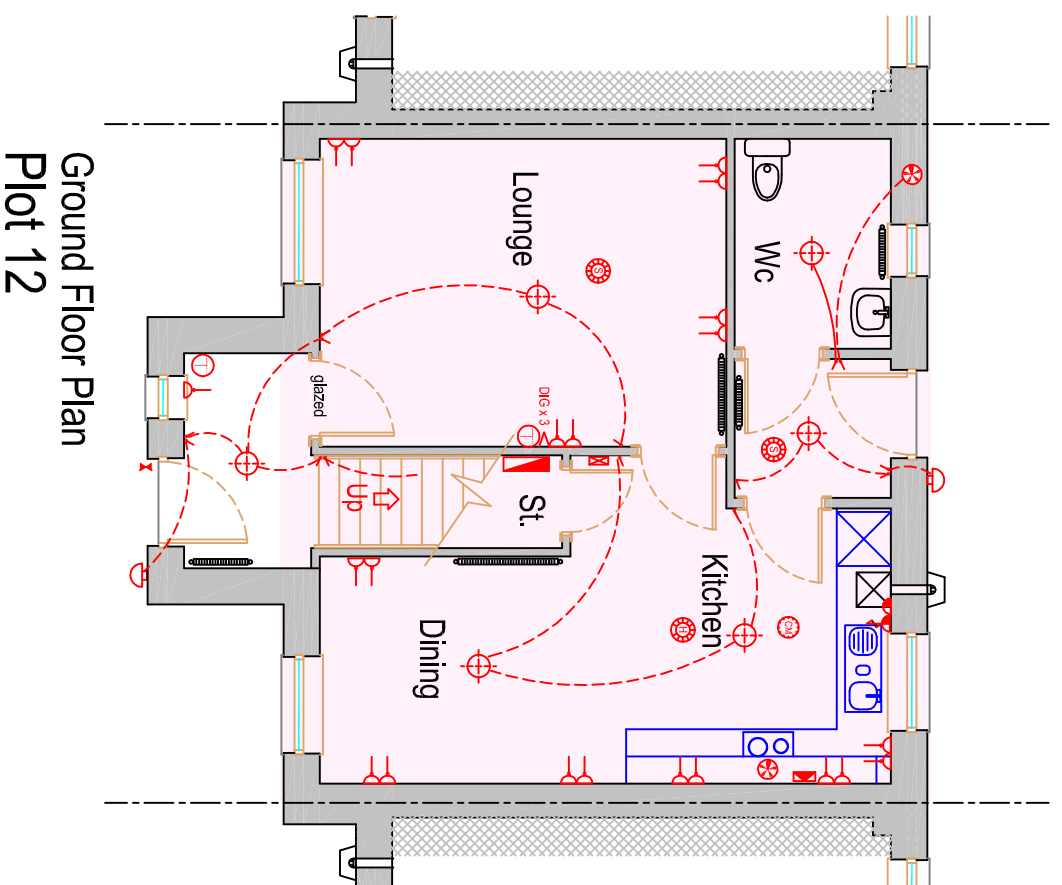


Room Sizes	metric (M)		imperial	
Lounge	3.40 x 4.49		11'2 x 14'9	
Kitchen/Dining	3.62 max x 6.30		11'11 max x 20'8	
Bedroom 1	3.40 x 2.85		11'2 x 9'4	
Bedroom 2	2.56 x 3.31		8'5 x 10'11	
Bedroom 3	3.16 x 2.69		10'4 x 8'10	
bathroom	2.58 x 2.23		8'6 x 7'4	



- LEGEND**
- 1 GANG SOCKET
 - 2 GANG SOCKET
 - UNDER UNIT SOCKET
 - SPUR
 - SINGLE SWITCH
 - DOUBLE SWITCH
 - CONSULNER UNIT & METER
 - EXTRACT FAN
 - COOKER CONTROL UNIT
 - TIME CLOCK
 - HEATING ZONE THERMOSTAT
 - HEATING RECOVERY CONTROL
 - TELEPHONE POINT, MASTER
 - TELEPHONE POINT, STD
 - DATA NETWORK (Cat 6)
 - DIGITAL CABLE POINT
 - SHOWER POINT
 - HEAT ALARM
 - HEAT ALARM
 - DOOR CHIME
 - BELL PUSH
 - DOOR CHIME
 - PENDANT LIGHT
 - RECESSED LIGHT
 - WALL LIGHT
 - STRIP LIGHT
 - RAD
 - ALARM SYSTEM



Every effort has been made to ensure details on this plan are accurate but this plan is indicative and non contractual and subject to change without notice

Plot 12 House Type

Eskside, East Mains, Angus, DD9 7WE

Ground Floor Plan
Plot 12

First Floor Plan
Plot 12