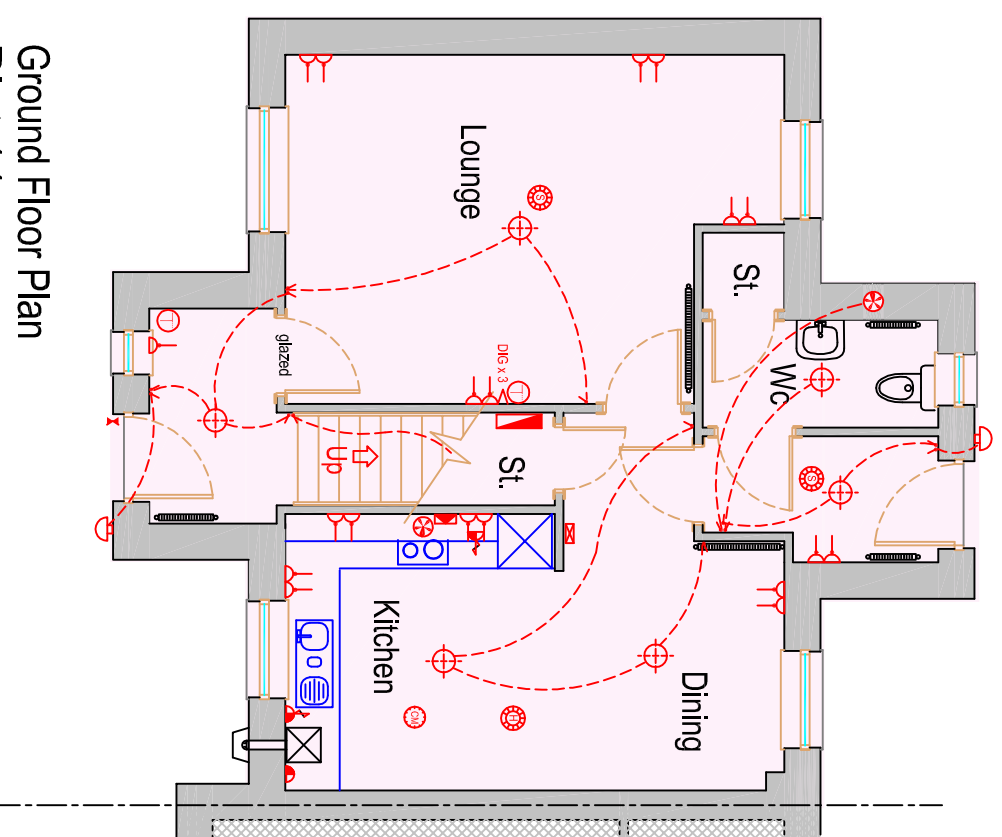
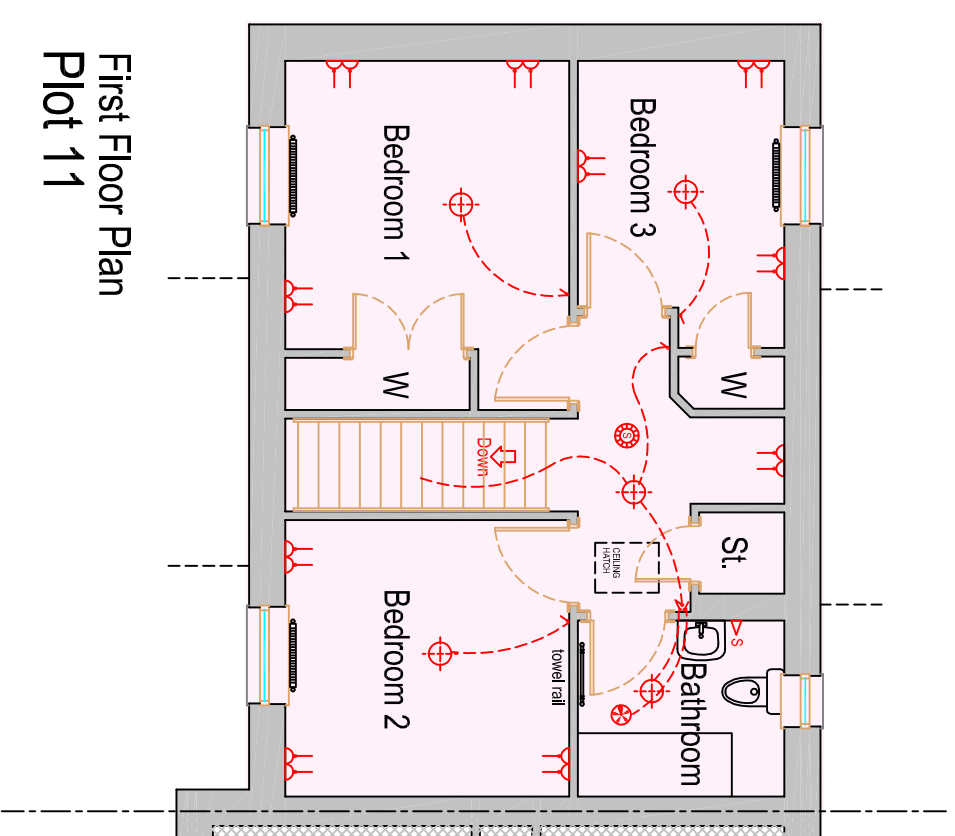


Room Sizes	metric (M)	imperial
Lounge	3.85 x 5.51 max	12'8 x 18'1 max
Kitchen/Dining	3.05 x 5.51	10' x 18'1
Bedroom 1	3.18 x 3.13	10'6 x 10'3
Bedroom 2	3.08 x 3.13	10'1 x 10'3
Bedroom 3	3.17 max x 2.28	10'5 max x 7'6
bathroom	1.97 x 2.28	6' x 7'6



Ground Floor Plan
Plot 11



First Floor Plan
Plot 11

LEGEND

1 GANG SOCKET	
2 GANG SOCKET	
UNDER UNIT SOCKET	
SPUR	
SINGLE SWITCH	
DOUBLE SWITCH	
CONSUMER UNIT & METER	
EXTRACT FAN	
COOKER CONTROL UNIT	
TIME CLOCK	
HEATING ZONE THERMOSTAT	
HEATING RECOVERY CONTROL	
TELEPHONE POINT - MASTER	
TELEPHONE POINT - STD	
DATA NETWORK (Cat 6)	
DIGITAL CABLE POINT	
SHOWER POINT	
SMOKE ALARM	
HEAT ALARM	
DOOR CHIME	
BELL PUSH	
DOOR CHIME	
PENDANT LIGHT	
RECESSED LIGHT	
WALL LIGHT	
STRIP LIGHT	
RAD	
ALARM SYSTEM	



Every effort has been made to ensure details on this plan are accurate but this plan is indicative and non contractual and subject to change without notice

Plot 11 House Type

Eskside, East Mains, Angus, DD9 7WE